

Helixor®

Mistletoe therapy for
tumor patients



Helixor®
Verifiably
effective in
palliative tumor
therapy

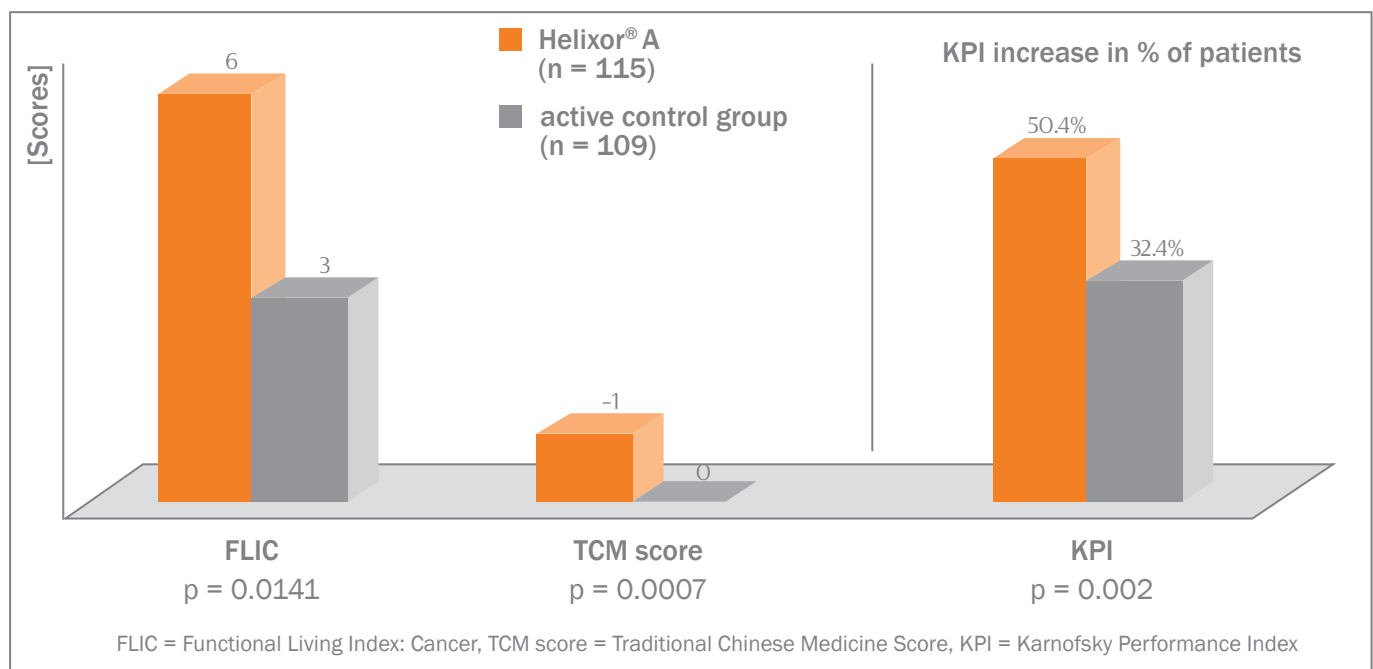
Aims of palliative tumor therapy¹:

- Alleviation of symptoms
- Improvement in quality of life
- if possible: Prolongation of life

The most common complaints among tumor patients in advanced stage²

Symptom	Frequency in %	Improvement due to Helixor® documented ³
Weakness, loss of energy (fatigue syndrome)	90	+
Inappetence	85	+
Pain	76	+
Nausea	68	+
Constipation	65	-
Sedation, confusion	60	-
Anxiety and depression	32	-
Dyspnea	12	-

Helixor® A shows significant improvement in quality of life compared to the active control group³



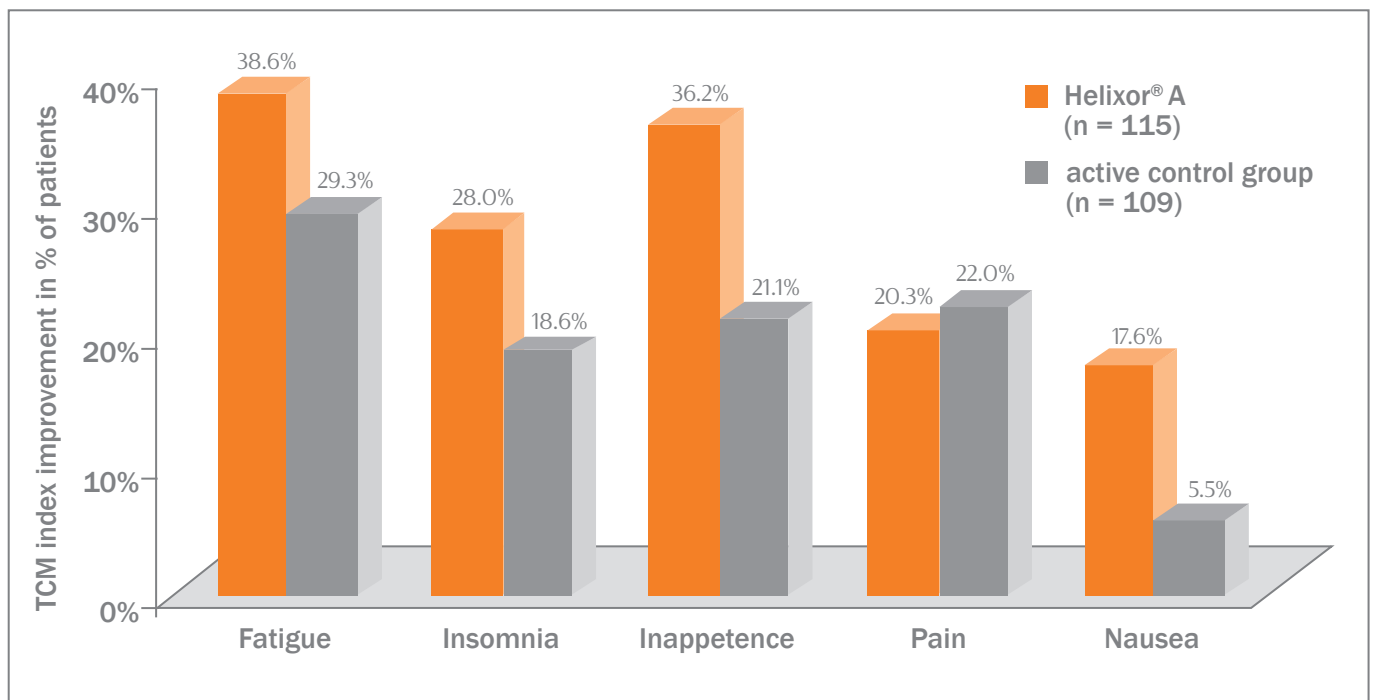
Patient population: non-small-cell lung cancer (n = 94), breast cancer (n = 68), ovarian cancer (n = 71), treatment with polychemotherapy: palliative (n = 116), adjuvant (n = 117)

Aim of the study: testing the influence of Helixor® A on quality of life and tolerance of chemotherapy

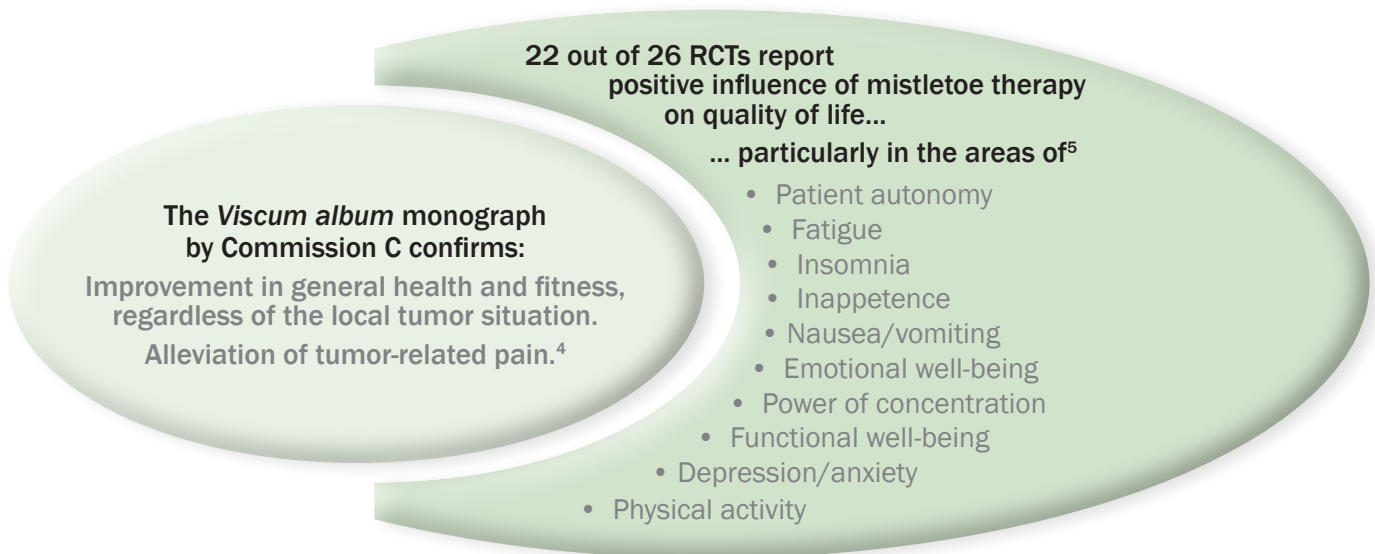
Study design: multicentric prospective randomized open study (phase III)

Comparison groups: *Verum:* Polychemotherapy + Helixor® A, 3x per week s.c.
Control: Polychemotherapy + Lentinan i.m. (oncological standard supportive medication in China/Japan with verifiable efficacy on quality of life).

Improvements in individual dimensions of quality of life³



Influence spectrum of mistletoe therapy on quality of life



Patient opinion (outcome of a survey)⁶

At 26%, mistletoe preparations are the most commonly administered medicinal product in complementary medicine.

► They provide strength, both in a biological and a psychological sense, and give hope.

Conclusions

Helixor® is an important therapeutic option in oncological palliative therapy with a reliable effect on the most common complaints and a high level of acceptance among patients.

Helixor®

Mistletoe therapy for
tumor patients

Integrative oncology with Helixor®

Treating tumor patients integratively

In integrative oncology, the holistic mistletoe therapy from Helixor significantly improves quality of life for patients at all stages of tumor treatment.

It stimulates self-healing and minimizes ailments, and its efficacy has been documented in numerous reviews and trials.

Literature

- (1) Hiddemann W, Huber H, Bartram C: Die Onkologie. Springer-Verlag 2010
- (2) Bausewein, Hartenstein. Oncology and Palliative Care. Onkologie 2010;23:534-7
- (3) Piao BK, Wang YX, Xie GR, Mansmann U, Matthes H, Beuth J, et al. Impact of complementary mistletoe extract treatment on quality of life in breast, ovarian and non-small cell lung cancer patients. A prospective randomized controlled clinical trial. Anticancer Research 2004;24(1):303-10.
- (4) Commission C. Monograph: Viscum album. Bundesanzeiger 1986;38(99a).
- (5) Kienle GS, Kiene H. Influence of Viscum album L (European Mistletoe) extracts on quality of life in cancer patients: A systematic review of controlled clinical studies. Integrative cancer therapies 2010;9(2):142-57.
- (6) Nagel G, Theobald S, Neusetzter B, Andörsch J. Selbstmedikation bei Krebs. Pharmazeutische Zeitung 2004;149:4474-8

For questions on
eligibility for reimbursement
and for medical advice:

Telephone: 0049 (0)800 9353-440*
Fax: 0049 (0)800 9353-500*
E-mail: beratung@helixor.de

*free from
German landlines

 **Helixor**
Bringing Life to Life.

Helixor® A/-M/-P injection solution. Composition: Aqueous extract of fresh mistletoe leaves (1:20), special blend of winter and summer harvests in a standardized manufacturing process. Manufacturing of Helixor® A from fir mistletoe, Helixor® M from apple tree mistletoe, Helixor® P from pine tree mistletoe. The amount of fresh plant used to produce an ampoule is given in mg. **Therapeutic indications:** In accordance with the anthroposophic knowledge of man and nature. Malignant and benign tumorous diseases, stimulation of bone marrow activity, relapse prevention after tumor surgery, defined precancerous conditions. **Contraindications:** Acute inflammatory, feverish disorders, mistletoe allergy; pregnancy: if strictly indicated. **Adverse effects:** Local inflammatory reactions at the subcutaneous injection site, fever, flu-like symptoms, regional lymph node swelling, activation of inflammation, allergic reactions. **Note:** If there is a proneness to phlebitis, the injections are to be administered outside of the regions at risk of inflammation. In the event of pronounced hyperthyroidism, a delayed dosage increase is indicated. **Dosage:** s.c. according to the guidelines for treatment with Helixor®. In principle, begin with small doses. Increase dosage gradually while taking into account the patient's reaction. **Commercial forms:** Series packs (SE I - IV) with 7 ampoules; original packs (OP 0.01 - 100 mg) with 8 ampoules. Large packs and bundle packs (BP) with 4 x 7 amp. of SE II + SE IV also available. Helixor Heilmittel GmbH & Co. KG • Fischermühle 1 • 72348 Rosenfeld • mail@helixor.de • www.helixor.de